

Manual

Mini-Sing-A-Pur

The Singing Coach

Preparation and Installation

Driver

Sing-A-Pur needs the Audio-Driver *OpenAL*. If *OpenAL* could not be found at the first start, Sing-A-Pur cancels the start and suggests the installation of the driver. The OpenAL-Driver will now be installed automatically, the installation is very easy and harmless.

Advise:

OpenAL is a Audio-Optimizer of your soundcard. If you want to know more about the OpenAL-Driver, you can read here:

<http://connect.creativelabs.com/openal/default.aspx>

After the installation of the driver, Sing-A-Pur can be restarted.

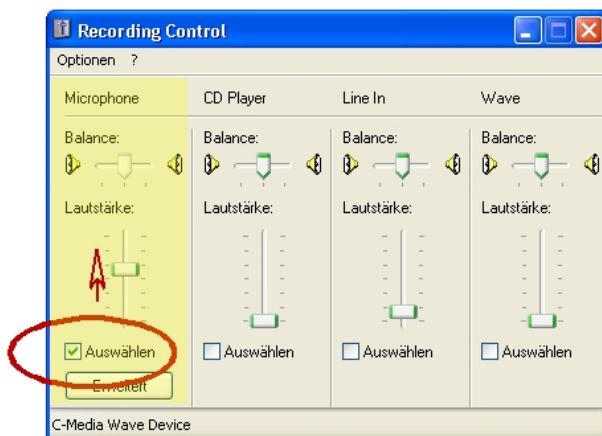
Microphon

Sing-A-Pur needs a microphone plugged to the computer. A build in microphone is not suitable. Take care about the position is not too close to the speakers, because Sing-A-Pur is able to sound and listen. In worst case Sing-A-Pur would listen to itself.

Advise:

If needed you can buy a good studio microphone at midimasters webshop for 25,00 EUR. Adapters and 5m cable to connect to a computer are already included in this price.

The microphone channel and the volume of the microphone has to be adjusted in the recording control. As more silent you sing, as better will be the recognition. So rise the volume slider up!



Comment:

You will find the volume mixer in Windows at Start- All Programs - Accessories - Entertainment - Audio Volume. There you can change via options - properties the mixer to "recording" and confirm with "OK". Back to the Mixer you activate the microphone channel and push the slider up!

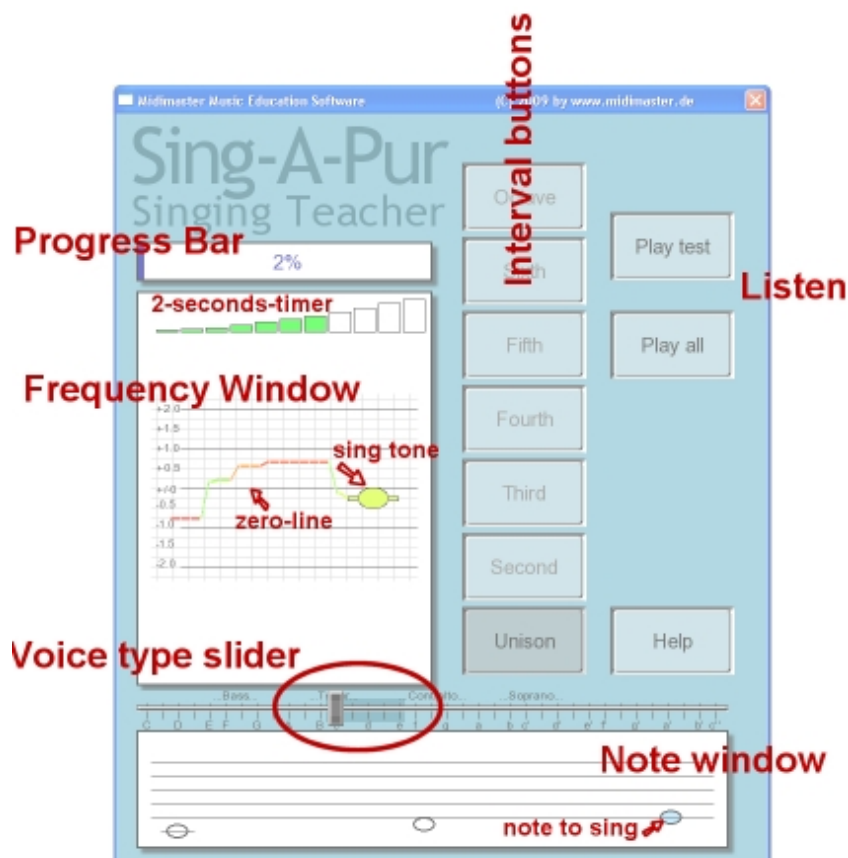
Possibilities of Sing-A-Pur

With Sing-A-Pur it is possible to examine the singing of tones and intervals. Based on a range of the first three notes of a scala the student starts to sing single notes (Prime). Sing-A-Pur expands the range of notes depending on the students performance upto a whole 8 notes major-scale. The student decides to expand the range from Prime, Third,...

In Interval-Mode the computer plays the first sound, the student should sing the 2nd note. The exercise can require both upward and downward arranged intervals. The intervals are queried in such a way, as they occur in a Major scale. E.g. between I and II (C/D) you have to sing a Major second, between III and IV (E/F) a Minor second. This interval handling is very natural for singers (Solmisation)

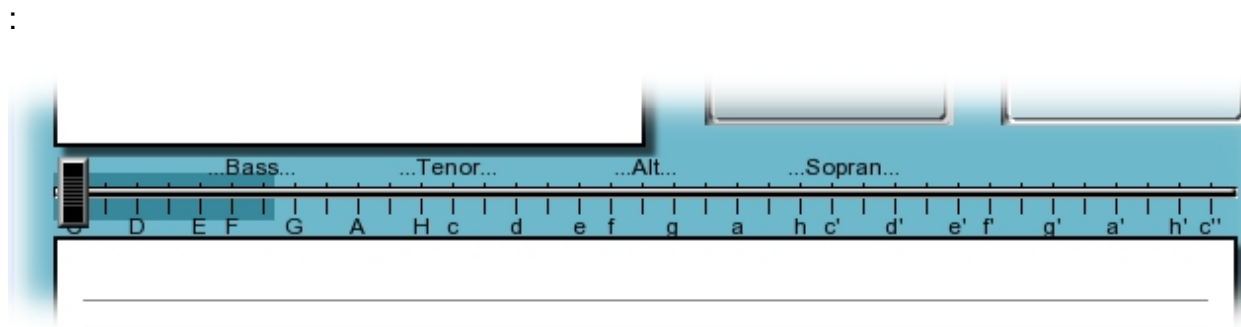
In the frequency window the student can see, how closed his singing was to the expected tone. So he can correct himself and gain experience

Overview screen elements



Settings on Start

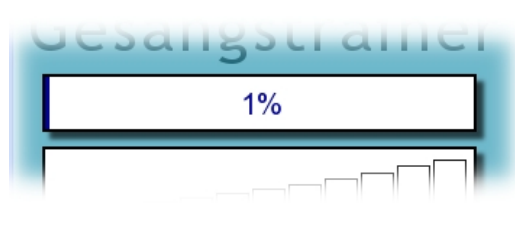
At first the student selects the the voice type, in which the exercise takes place. He can select over three octaves from the deep bass C th the high violin note c". For selection move the slider. If the tones are too high during the exercise, adjust the range new.



Selection of Intervals

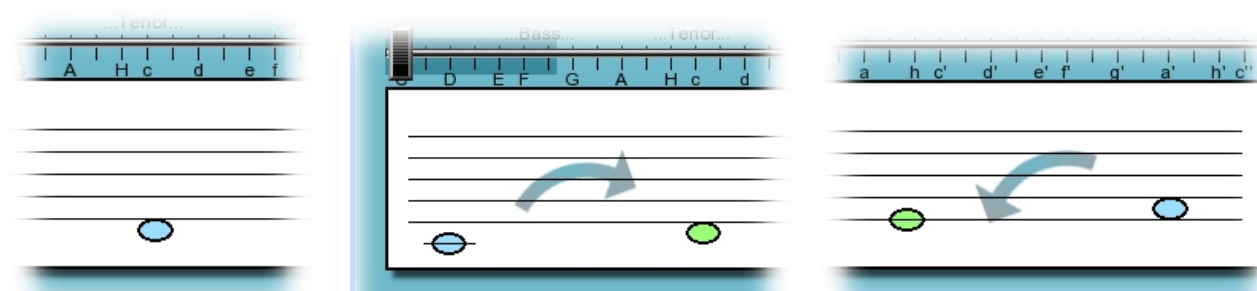


In Sing-A-Pur every exercise starts with three notes and only Primes. If the student managed this step well, Sing-A-Pur expands the exercise to more notes. If the student reaches a quality of more than 50%, Sing-A-Pur offers to add an additional interval. The next step interval-button blinks and the student accepts this by clicking the button. We suggest to practice a new interval for some minutes before adding the next step, although Sing-A-Pur offers this very soon.



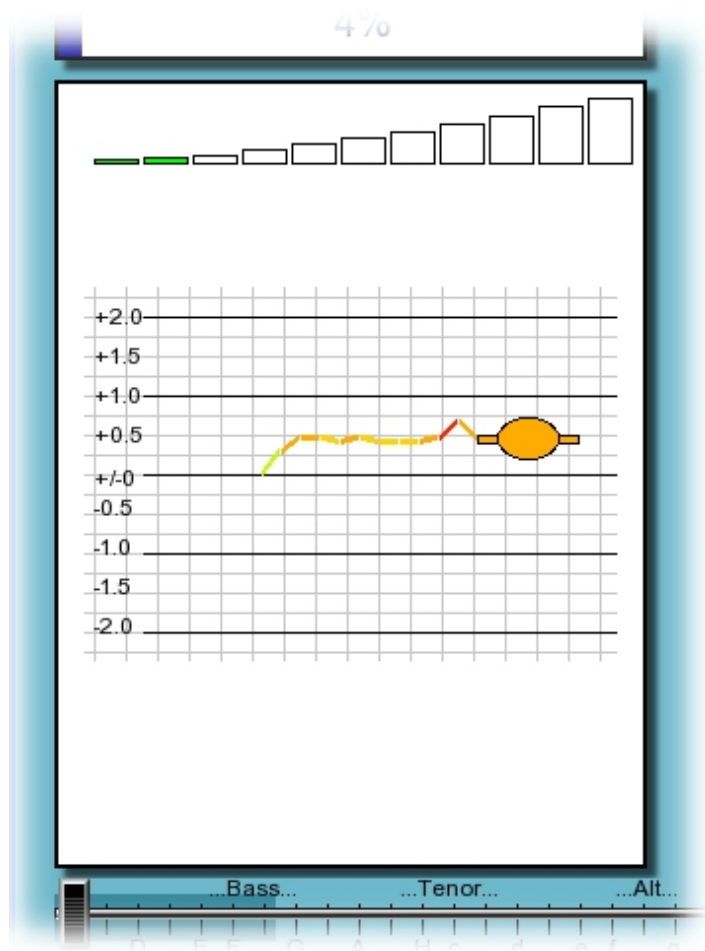
The Exercise

The Task is to sing a note or an interval on the certain step of a Major scale. If only one note is displayed, you have to sing only one note. If two notes are displayed you have to sing the second note, while you hear the first note. The interval can be upward or downward.



The note-windows shows you independent of the playing scale, the note always like in a C-Major Scale. (Solmisation). This should only inform you about the relative step position (I to VIII) inside the scale.

The frequency window



The frequency window displays the sung note and the deviation from the ideal. The correct note would be on the Zero-line. If the student sings too high, the note is displayed above the Zero-Line, if too deep, the note is below the line.

Comment:
The sung octave is ignored. Each sung C will be a correct answer, if C is the requested note.

Sing the correct note for min. 2 seconds to be accepted. The progress bar is a 2-second timer.

The frequency window displays differences up to a third from the correct note

Comment:
If the difference is more than a third, a tone which is sung "too high", can also be displayed as "too low". Remind: a deep fourth could be a high fifth, because octaves are ignored

The Singer has 25 seconds of time to find the tone. If the result is positive, the windows

color changes to green. In case of timeout the color changes to red and a new tone will be selected.

Buttons:

Button "Play test":

Sing-A-Pur repeats only the first note of an interval. You sing the second one. Alternative: Press "A".

Button "Play all":

Sing-A-Pur plays the first note of the intervals and then repeats the second note. You sing the second note. Alternative: Press <SPACEBAR>.

Button "Prime" - "Octave"

This buttons have several states:

Active: Text is black, interval can be part of the exercise. The exercise can be reduced to this level by clicking on the button.

Passive: text is greyed, interval is not part of the exercise. You cannot click this button.

Blinking: Text is blinking, interval is not yet part of the exercise, but the exercise can be expanded now to this level by clicking on the button.

Selected: button is colored. Your job is to sing this interval now.

Click into the note window

With clicking into the note window you can hear the whole scale.

Typical session with Sing-A-Pur

Every session with Sing-A-Pur starts with the selection of the voice type and within the desired diatonic scale. First you take a start point closed to your ideal tone (the tone you will sing easily) As a advanced student you can expand this up- and downward and try deeper or higher scales.

Sing-A-Pur now picks the first tone by random. Your first look is to the note window. Sing this note. By pressing <SPACE> bar Sing-A-Pur repeats this note. You are allowed to sing already when sound is still playing. Now you look to the frequency window. Try to bring the note to the Zero-Line. The color of the note changes to green, if you sing correct and the 2-sec-Timer fills up.

You have 25 seconds of time to find the tone. In case of success, Sing-A-Pur picks a new tone. The whole tone amount should be sung several times. The blue progress bar shows the success.

Shortly before the end of the exercise, Sing-A-Pur expands the amount of notes and restarts the exercise. If you are very good, one of the interval buttons starts blinking and you are allowed to expand the exercise to additional intervals.

Although Sing-A-Pur often offers a blinking intervall button, you should be carefull with adding new intervals. First make your experiences with the actual interval, until you reached the complete tone amount of 8 notes for this interval and you are 100% satisfied with your results.

In the case of inquiring intervals (instead of single notes), Sing-A-Pur show two colored notes in the note window. Sing-A-Pur plays the first note (blue) , but you should sing the second note (green). By pressing <SPACE> bar you can listen both notes: first note one time and second note several times.